

# Community Consultation:



29 May – 9 July 2024

When we launched One Earth Solar Farm last year, we wanted to make best use of the opportunity presented by the decommissioned coal power station at High Marnham to deliver as much clean energy as possible and fight climate change, while being sensitive to the local community and environment.

That's why we consulted last Autumn on our early designs to get feedback from technical experts and the local community. We have listened to feedback from that consultation and have made a number of significant changes to our project design, including:

- Removing panels near the villages and homes that are near the site boundary to reduce potential visual impacts.
- Including new large environmental enhancement areas to support native species, as well as new permissive paths to support recreation and access across the site.
- Additionally, we are now able to show the potential locations for major technical components, including the batteries, substations and the river crossing.

During this second phase of consultation, we are inviting your feedback on our updated project. We have created a variety of ways to learn more and have your say, including a number of public information events in the local area.

The updated proposals and the preliminary environmental assessments we are sharing as part of this consultation are not finalised, which is to allow for regard to be had to your feedback. We will consider feedback we receive during this consultation as well as the results of ongoing environmental assessments to inform the project proposals that will be submitted in the application.

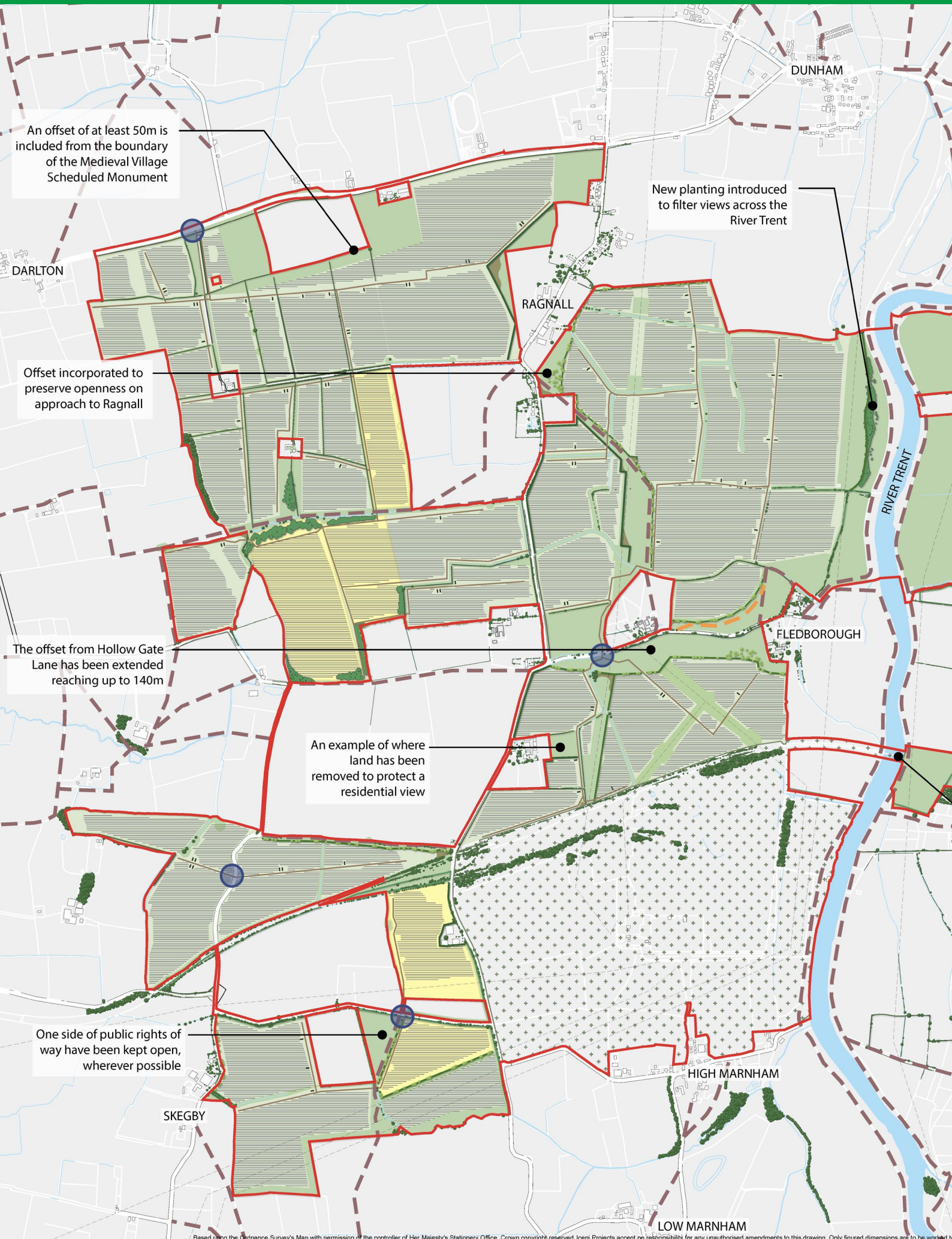
**We encourage everyone to take part in the consultation, and we look forward to hearing from you.**

**One Earth** is being developed by **Ørsted** and **PS Renewables**





# Updated Project Masterplan







**Key**

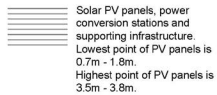
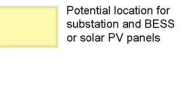
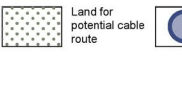
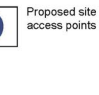
**Proposed Landscape Mitigation**

-  Species-rich meadow mix beneath solar panels
-  Landscape mitigation comprising species rich grassland and wildflower meadows
-  Proposed new hedgerow with trees
-  Proposed hedgerow
-  Proposed woodland
-  Proposed scattered trees
-  Proposed scrub

**Existing Landscape Features**

-  Existing hedgerow
-  Existing trees and woodland

**Solar PV infrastructure**

-  Solar PV panels, power conversion stations and supporting infrastructure. Lowest point of PV panels is 0.7m - 1.8m. Highest point of PV panels is 3.5m - 3.8m.
-  Potential location for substation and BESS or solar PV panels
-  Land for potential cable route
-  Proposed site access points

**Public Rights of Way**

-  Existing PRoW
-  Proposed permissive paths

# How to take part in this consultation



To learn more about our updated proposals, you can view our consultation materials at the project website: [oneearthsolarfarm.co.uk](http://oneearthsolarfarm.co.uk), or come to one of the information events below to view our materials and ask questions to the project team.

## Information Events

Date	Location
Friday, 7 June 2024 4 - 8 pm	Dunham on Trent Village Hall, Dunham NG22 0FJ
Saturday, 8 June 2024 12 - 4 pm	St Peters Church, Newton on Trent, Lincoln LN1 2JS
Wednesday, 12 June 2024 2 - 6 pm	South Clifton Coronation Hall, South Clifton, NG23 7AN
Thursday, 13 June 2024 12 - 4 pm	Normanton Village Hall, Normanton on Trent, NG23 6RQ
Tuesday, 18 June 2024 6 - 7 pm	Webinar – Please visit our website to register: <a href="http://oneearthsolarfarm.co.uk">oneearthsolarfarm.co.uk</a>
Saturday, 29 June 2024 12 - 4 pm	South Clifton Coronation Hall, South Clifton, NG23 7AN
Wednesday, 3 July 2024 6 – 7 pm	Webinar – Please visit our website to register: <a href="http://oneearthsolarfarm.co.uk">oneearthsolarfarm.co.uk</a>

## Get in touch



[www.oneearthsolarfarm.co.uk](http://www.oneearthsolarfarm.co.uk)



0800 169 6507 Answered 9am-5pm on weekdays,  
or leave a message and we will call you back



[info@oneearthsolarfarm.co.uk](mailto:info@oneearthsolarfarm.co.uk)



One Earth Solar Farm, Freepost  
SEC NEWGATE UK LOCAL